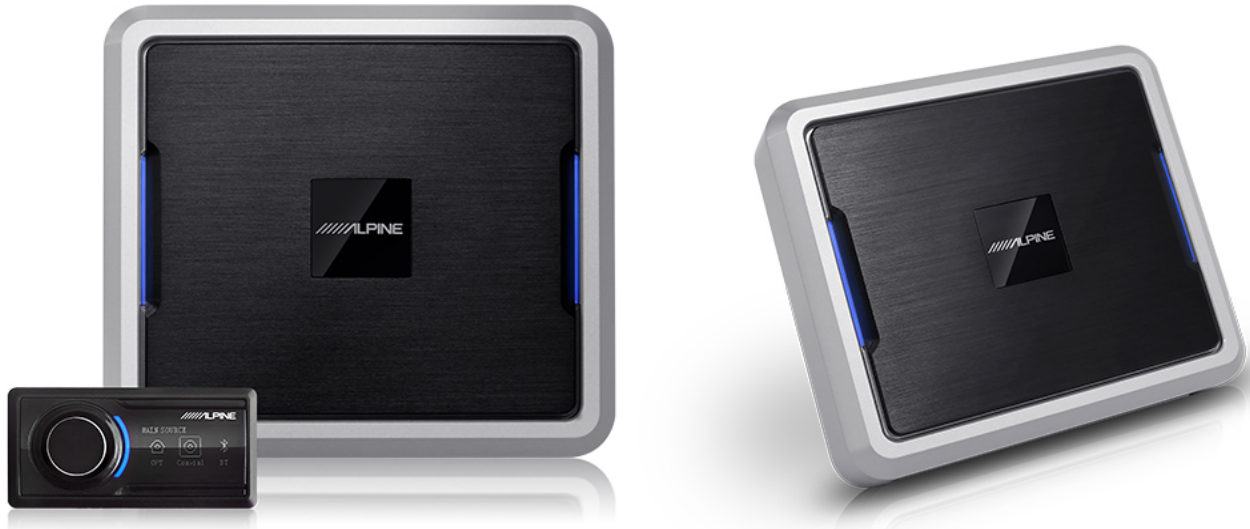


PXE-0850X

12-Channel Advanced Wireless Digital Sound Processor



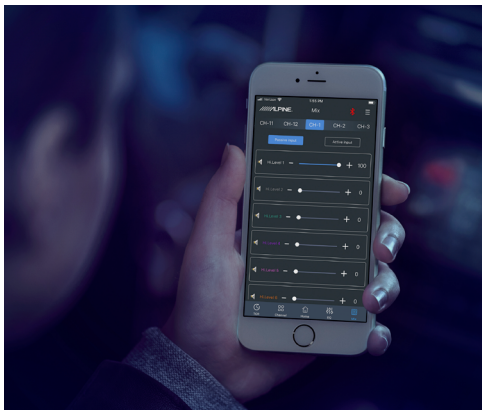
PRODUCT OVERVIEW

The next generation of upgraded technology that seamlessly integrates into factory systems

PRODUCT FEATURES

OEM Integration – The PXE-0850X has 6 low and/or high-level inputs that can be mixed to create a full range signal that sends up to 12 independent channels for versatility in OEM and aftermarket system building. Eight of the 12 channels can utilize 25W of powered output to allow even more flexibility.

Tuning Tools – The processor can be tuned with the 31 Band Parametric or Graphic EQ for precise adjustments. Detailed high/low crossovers and expansive time correction can be made to each of the 12 channels.



Music on Command – Access to some of the DSP's features is presented in the improved LCD controller, which can be flush-mounted on the dash for quick adjustments to volume, preset storage and recall, subwoofer level, and source selection with results displayed on the LED screen..

Improved Software – New and improved software matches the user interface (UI) of the PXE-X09 (introduced in 2020) and provides a cleaner layout that simplifies the mixer and tuning flow.

TECH SPECS

- 6 Low and/or High-level inputs
- 12 RCA outputs
- 25W RMS x 8 (4Ω, <1% THD+N, 14.4V) (mirrors the first 8 RCA outputs)
- Matrix Mixing
- Bluetooth® audio streaming with included external module
- Wireless sound tuning via smartphone. PC tuning also available
- Dash-mounted remote controller included
- Specialized type filtering: Butterworth, Linkwitz-Riley, Bessel
- Frequency range: 20Hz ~ 20KHz, 1Hz steps
- Q: 0.404 ~ 28.85, 0.01 steps
- Gain: -12.0dB ~ +12.0 dB, 0.1 dB steps
- Filter crossover points: 20Hz – 20KHz. 1Hz steps
- Slopes: 12dB, 18dB, 24dB, 30dB, 36dB, 42dB, 48dB
- Up to 20ms of time delay per channel
- TI 32-bit DSP with 300MHz floating point processing
- Delay units: 0.000 to 20 milliseconds, 0.00 to 692 centimeters, 0.00 to 273 inches
- 0 deg. or 180 deg. phase adjustment per channel
- TI 24-bit premium audio ADC/DAC
- 31 Band Parametric or Graphic Output EQ
- High pass, low pass, and bandpass, independent filters per channel